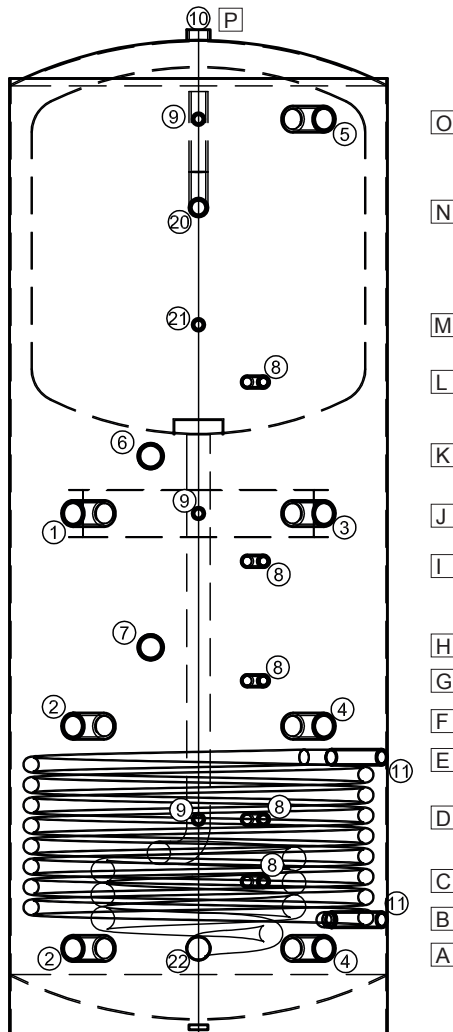


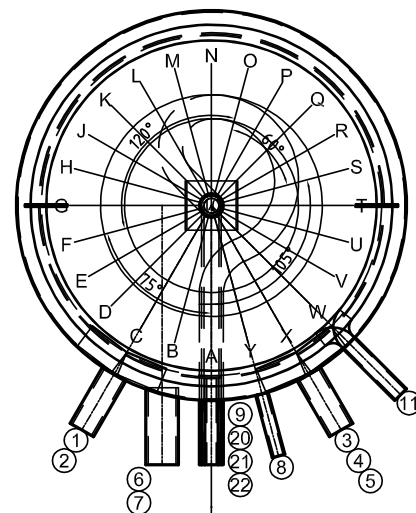


**ARB HAUSTECHNIK GMBH**  
ERNEUERBARE ENERGIESYSTEME

# TopSol - Datenblatt



- 1.) VL-Be-/Entladung/Heizkreis Muffe mit hydr. Schichtweiche
- 2.) RL-Be-/Entladung/Heizkreis Muffe
- 3.) VL-Be-/Entladung/Heizkreis Muffe mit hydr. Schichtweiche
- 4.) RL-Be-/Entladung/Heizkreis Muffe
- 5.) Muffe Topladung
- 6.) E-Einsatz (Warmwasser)
- 7.) E-Einsatz (Heizung)
- 8.) Fühlermuffe
- 9.) Thermometermuffe
- 10.) Muffe Entlüftung
- 11.) Nippel Glattröhrwärmetauscher
- 20.) Muffe Ww-Anschluss
- 21.) Muffe Zirkulation
- 22.) Muffe Kw-Anschluss



**Isolation:** 130 mm Polyesterfaservlies mit Polystyrol-Mantel silbergrau (Deckel 150 mm, Boden 50 mm), optional 160 mm Isolation möglich

| Type                  | TS 750             | TS 950             | TS 950             | TS 1200            | TS 1450            |
|-----------------------|--------------------|--------------------|--------------------|--------------------|--------------------|
| Inhalt                | 752,6l             | 928,7l             | 929,2l             | 1188,2l            | 1440,7l            |
| ø ohne Iso            | 750                | 790                | 790                | 900                | 1000               |
| ø inkl. Iso           | 1010               | 1050               | 1050               | 1160               | 1260               |
| Höhe ohne Iso         | 1875               | 2080               | 2080               | 2065               | 2060               |
| Höhe inkl. Iso        | 2005               | 2210               | 2210               | 2195               | 2190               |
| Kippmass              | 1960               | 2155               | 2155               | 2180               | 2200               |
| Boiler Inhalt         | 200 Liter          | 200 Liter          | 270 Liter          | 270 Liter          | 270 Liter          |
| Vorwärmer             | 1,2 m <sup>2</sup> | 1,2 m <sup>2</sup> | 1,2 m <sup>2</sup> | 1,8 m <sup>2</sup> | 1,8 m <sup>2</sup> |
| Wärmetauscher         | 1,2 m <sup>2</sup> | 2,4 m <sup>2</sup> | 1,8 m <sup>2</sup> | 2,4 m <sup>2</sup> | 2,4 m <sup>2</sup> |
| EU-WHV <sup>(1)</sup> | 125,9 W            | 138,0 W            | 138,0 W            | 154,3 W            | 171,5 W            |
| CH-WV <sup>(2)</sup>  | 3,0 kWh/24h        | 3,3 kWh/24h        | 3,3 kWh/24h        | 3,7 kWh/24h        | 4,1 kWh/24h        |
| Gewicht               | 220 kg             | 268 kg             | 264 kg             | 298 kg             | 309 kg             |

<sup>(1)(2)</sup> Warmhalteverlust in W/h (EU) bzw. Wärmeverlust in kWh/24h (CH)

# Anschlussdetails (Höhe in mm ab Unterkante Stehring bzw. Stellfüsse / Durchmesser Anschlüsse in Zoll)

| Type | TS 750 |          | TS 950 |          | TS 950 |          | TS 1200 |          | TS 1450 |          |
|------|--------|----------|--------|----------|--------|----------|---------|----------|---------|----------|
| A    | 180    | 1½"      | 180    | 1½"      | 180    | 1½"      | 205     | 1½"      | 230     | 1½"      |
| B    | 260    | 1"       | 240    | 1"       | 240    | 1"       | 255     | 1"       | 280     | 1"       |
| C    | 330    | ½"       | 320    | ½"       | 320    | ½"       | 345     | ½"       | 370     | ½"       |
| D    | 470    | ½"       | 450    | ½"       | 450    | ½"       | 500     | ½"       | 525     | ½"       |
| E    | 515    | 1"       | 710    | 1"       | 580    | 1"       | 725     | 1"       | 665     | 1"       |
| F    | 595    | 1½"      | 775    | 1½"      | 645    | 1½"      | 795     | 1½"      | 735     | 1½"      |
| G    | 690    | ½"       | 870    | ½"       | 740    | ½"       | 875     | ½"       | 815     | ½"       |
| H    | 740    | 1 ½"     | 940    | 1½"      | 810    | 1½"      | 925     | 1½"      | 865     | 1½"      |
| I    | 905    | ½"       | 1090   | ½"       | 990    | ½"       | 985     | ½"       | 1010    | ½"       |
| J    | 1005   | 1½"   ½" | 1190   | 1½"   ½" | 1090   | 1½"   ½" | 1075    | 1½"   ½" | 1100    | 1½"   ½" |
| K    | 1105   | 1 ½"     | 1310   | 1½"      | 1210   | 1½"      | 1195    | 1½"      | 1180    | 1½"      |
| L    | 1250   | ½"       | 1365   | ½"       | 1365   | ½"       | 1350    | ½"       | 1335    | ½"       |
| M    | 1390   | ½"       | 1590   | ½"       | 1485   | ½"       | 1470    | ½"       | 1455    | ½"       |
| N    | 1535   | 1"       | 1735   | 1"       | 1730   | 1"       | 1715    | 1"       | 1700    | 1"       |
| O    | 1690   | 1½"   ½" | 1915   | 1½"   ½" | 1915   | 1½"   ½" | 1900    | 1½"   ½" | 1845    | 1½"   ½" |
| P    | 1875   | 1¼"      | 2080   | 1¼"      | 2080   | 1¼"      | 2065    | 1¼"      | 2060    | 1¼"      |

## Leistungsdaten Boiler

| Type    | Boiler Inhalt | C° | 45 °C         |     |    | 60 °C         |     |      |
|---------|---------------|----|---------------|-----|----|---------------|-----|------|
|         |               |    | 10 min Spitze | l/h | kW | 10 min Spitze | l/h | kW   |
| TS 750  | 200           | 50 | 229           | 260 | 11 | -             | -   | -    |
|         |               | 55 | 259           | 300 | 14 | -             | -   | -    |
|         |               | 60 | 288           | 345 | 16 | 200           | 284 | 19   |
|         |               | 70 | 347           | 480 | 22 | 241           | 332 | 22   |
|         |               | 80 | 406           | 632 | 30 | 282           | 440 | 30   |
| TS 950  | 200           | 50 | 229           | 260 | 11 | -             | -   | -    |
|         |               | 55 | 259           | 300 | 14 | -             | -   | -    |
|         |               | 60 | 288           | 345 | 16 | 200           | 284 | 19   |
|         |               | 70 | 347           | 480 | 22 | 241           | 332 | 22   |
|         |               | 80 | 406           | 632 | 30 | 282           | 440 | 30   |
| TS 950  | 270           | 50 | 300           | 350 | 14 | -             | -   | -    |
|         |               | 55 | 340           | 395 | 16 | -             | -   | -    |
|         |               | 60 | 380           | 445 | 18 | 270           | 450 | 26   |
|         |               | 70 | 455           | 665 | 27 | 370           | 525 | 30,5 |
|         |               | 80 | 530           | 770 | 31 | 430           | 690 | 40   |
| TS 1200 | 270           | 50 | 300           | 350 | 14 | -             | -   | -    |
|         |               | 55 | 340           | 395 | 16 | -             | -   | -    |
|         |               | 60 | 380           | 445 | 18 | 270           | 450 | 26   |
|         |               | 70 | 455           | 665 | 27 | 370           | 525 | 30,5 |
|         |               | 80 | 530           | 780 | 31 | 430           | 690 | 40   |
| TS 1450 | 270           | 50 | 300           | 350 | 14 | -             | -   | -    |
|         |               | 55 | 340           | 395 | 16 | -             | -   | -    |
|         |               | 60 | 380           | 445 | 18 | 270           | 450 | 26   |
|         |               | 70 | 455           | 665 | 27 | 370           | 525 | 30,5 |
|         |               | 80 | 530           | 780 | 31 | 430           | 690 | 40   |

## Leistungsdaten Glattrohrwärmetauscher

| Register | 80/60 °C<br>10/45 °C |       |      | 80/60 °C<br>10/55 °C |       |      | 80/60 °C<br>10/60 °C |       |      | 70/50 °C<br>10/45 °C |       |     | 70/50 °C<br>10/55 °C |       |     |
|----------|----------------------|-------|------|----------------------|-------|------|----------------------|-------|------|----------------------|-------|-----|----------------------|-------|-----|
|          | KW                   | Liter | kPa  | KW                   | Liter | kPa  | KW                   | Liter | kPa  | KW                   | Liter | kPa | KW                   | Liter | kPa |
| 1,2      | 37                   | 909   | 2,1  | 31                   | 592   | 1,5  | 27                   | 464   | 1,2  | 24                   | 589   | 1,1 | 17                   | 325   | 0,6 |
| 1,8      | 60                   | 1.474 | 7,5  | 50                   | 955   | 5,4  | 44                   | 756   | 4,3  | 39                   | 958   | 3,6 | 29                   | 554   | 2,2 |
| 2,4      | 84                   | 2.064 | 18,5 | 70                   | 1.337 | 13,4 | 62                   | 1.066 | 10,7 | 55                   | 1.351 | 9,0 | 41                   | 783   | 5,3 |